

WWW.GEUS.DK/GMOM

– Greenland Mineral Occurrence Map on-line

GREENLAND MINERAL OCCURRENCE MAP


[Map](#)
[Definitions](#)
[Documentation](#)
[Contacts](#)
[Printer friendly](#)

A new source of information on the mineral occurrences of Greenland has been created by the Geological Survey of Denmark and Greenland (GEUS) and the Bureau of Minerals and Petroleum (BMP) as a web site based on an ArcIMS® facility. This provides access to maps and data for many commodities encountered at sites classified as indications, prospects or deposits. Try out the new facility at www.geus.dk/gmom

A new source of information

Greenland is a promising country for many commodities. Following a clearly defined policy for the attraction of international investments, GEUS and BMP have for a number of years co-operated to make data and information easily available for the international exploration industry. In January 2005 a new source of information concerning mineral occurrences in Greenland has been opened, providing a GIS interface on the Internet for a first look on the compiled data available in GEUS archives and databases.

Company data and GEUS databases

GEUS compiles regional mineral resource assessments based on all available data, including regional surveys financed by BMP, released company data from private exploration, and international literature. One of the products of such a mineral resource assessment is a mineral occurrence map showing the location of sites of special interest for exploration. For each site a number of attributes describe the occurrence. These are normally stored in GEUS databases, but can now be viewed on the Internet.

GIS interface

The mineral occurrence sites can be viewed on top of different backdrops: topographical details, terrain models, various anomaly maps based on airborne geophysics or regional geochemistry, etc. Thanks to the capabilities of ESRI ArcIMS environment, the

user can via this interface combine the different regional data with the sites and produce plots and files for personal browsing and use. Standard GIS tools can be used to interrogate a table of the attributes attached to each site. Additionally a hyperlink can be used to view a pdf-file containing GEUS' interpretation of the compiled information, including photos and detailed maps where available. All sites are fully referenced including company reports.

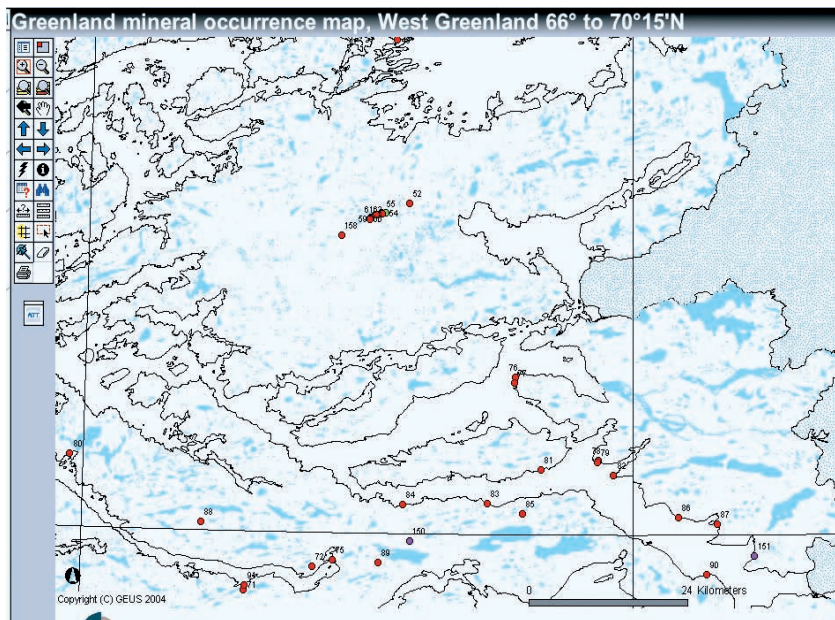
West Greenland 66° to 71°15' N

The first region to be published on the on-line Greenland Mineral Occurrence Map contains the data recently compiled for the mineral resource assessment of part of Central West Greenland. Some 160 sites have been identified and described and now can be studied by anyone with access to the Internet.

The home page for the new facility contains full documentation of all regional data sets used for backdrops on the map and gives the definitions of all attributes used to describe the properties of the mineralised sites of the region.

More data to come

The Greenland Mineral Occurrence Map will be updated if more information becomes available from a region already included. Several other projects are underway which will provide similar data from other regions of Greenland, or new general overviews of specific themes for the entire country.



Key references

Jensen, S.M., Secher, K., Rasmussen, T.M. & Schjøth, F. 2004: Diamond exploration data from West Greenland: 2004 update and revision, Danmarks og Grønlands Geologiske Undersøgelse Rapport 2004/117, + 1 DVD, 90 pp.

Schjøth, F. & Steenfelt, A. 2004: Mineral resources of the Precambrian shield of central West Greenland (66° to 70° 15'N), Part 1. Compilation of geoscience data. Danmarks og Grønlands Geologiske Undersøgelse Rapport 2004/16, 45 pp. + 1 DVD.

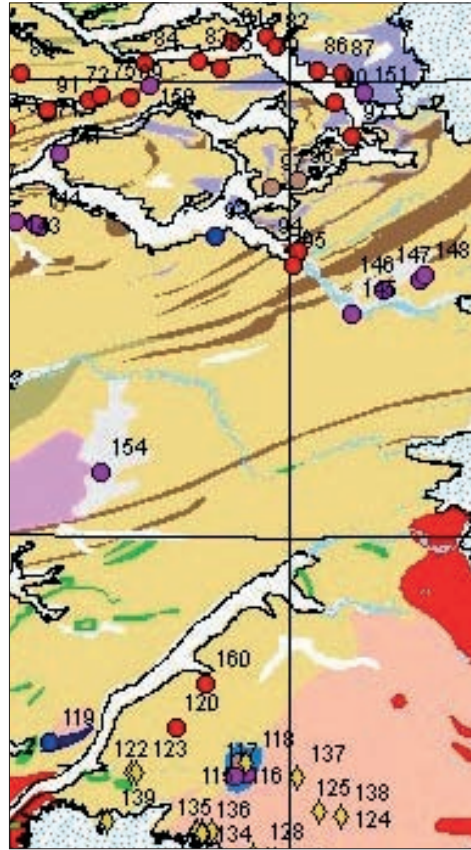
Secher, K. 2003: Map of known mineral occurrences in Greenland, Greenland Mineral Resources Fact Sheet 5, 2 pp.

Steenfelt, A., Stendal, H., Nielsen, B.M. & Rasmussen, T.M. 2004: Gold in central West Greenland – known and prospective occurrences. Geological Survey of Denmark and Greenland Bulletin 3, 65–68.

Stendal, H. & Schönwandt, H.K. 2003: Precambrian supracrustal rocks and mineral occurrences, Northeast Disko Bugt. Danmarks og Grønlands Geologiske Undersøgelse Rapport 2003/24, 57 pp.

Stendal, H., Nielsen, B.M., Secher, K. & Steenfelt, A. 2004: Mineral resources of the Precambrian shield of central West Greenland (66° to 70° 15'N), Part 2. Mineral occurrences. Danmarks og Grønlands Geologiske Undersøgelse Rapport 2004/20, 212 pp.

Thorning, L., Christensen, L. Schjøth, F. & Stendal, H. 2004: Greenland mineral occurrence map. Danmarks og Grønlands Geologiske Undersøgelse Rapport 2004/28, 52 pp.



Section of the geological map with mineral occurrences on top



Bureau of Minerals and Petroleum (BMP)

Government of Greenland
P.O. Box 930
DK-3900 Nuuk
Greenland

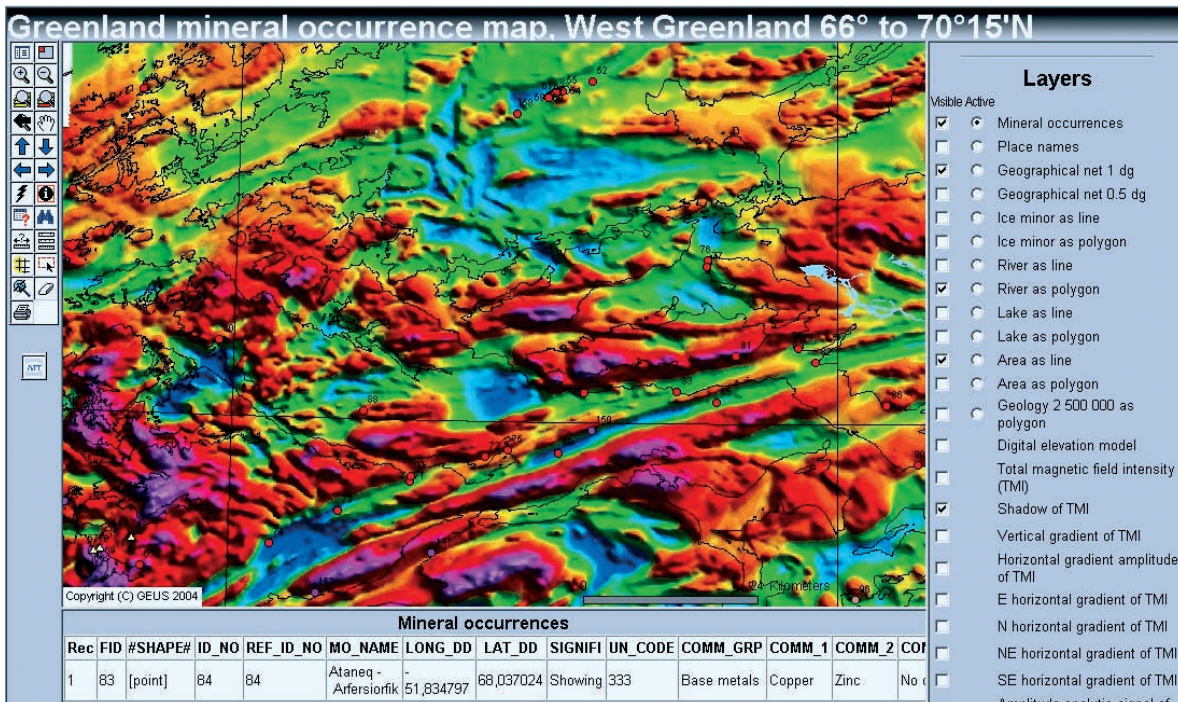
Tel: (+299) 34 68 00
Fax: (+299) 32 43 02
E-mail: bmp@gh.gl
Internet: www.bmp.gl



GEUS

Geological Survey of Denmark and Greenland (GEUS)
Øster Voldgade 10
DK-1350 Copenhagen K
Denmark

Tel: (+45) 38 14 20 00
Fax: (+45) 38 14 20 50
E-mail: geus@geus.dk
Internet: www.geus.dk



Author:
L. Thorning
Editor: K. Secher
Layout: GEUS, Grafisk
© GEUS 2005
ISSN: 1602-8171