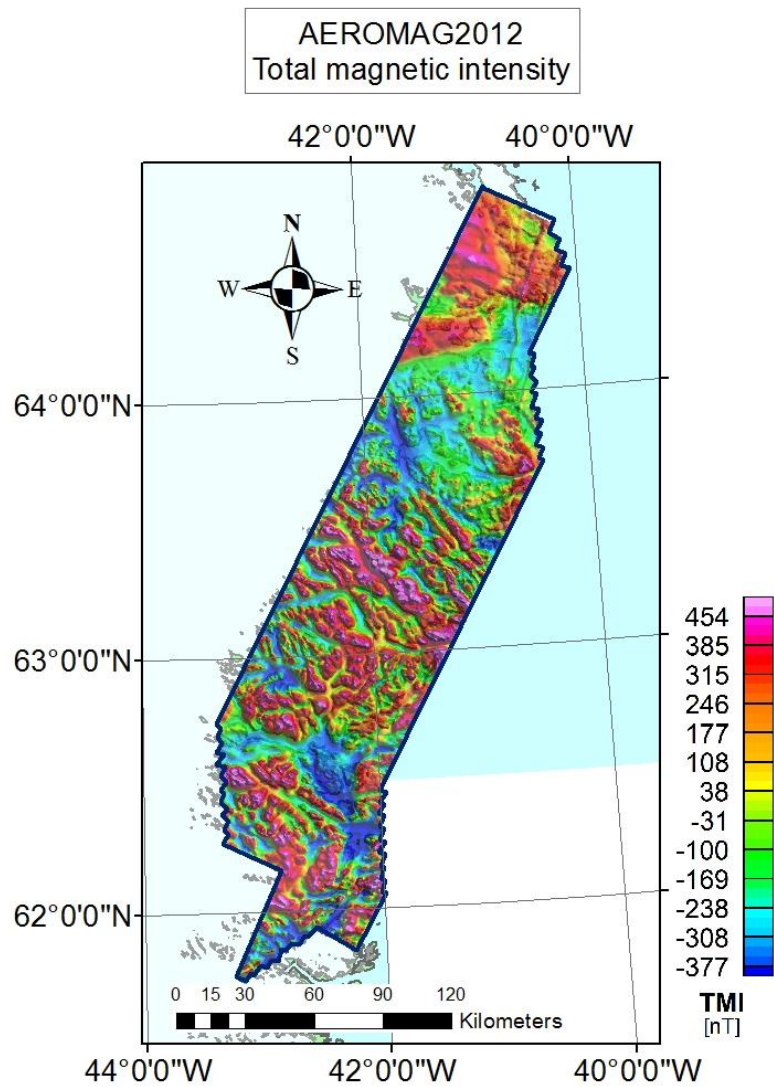


# Aeromag 2012

## Description of an aeromagnetic survey in Greenland 2012

The Aeromag 2012 survey area comprises coastal region of the southernmost southeast Greenland, which stretches from north of Kangeq (61°45'N) and further northward to Umiivik (64°30'N) (size: 22 636 km<sup>2</sup>). Data were collected and processed by EON Geosciences Inc. and the survey was contracted by the Geological Survey of Denmark and Greenland (GEUS). The survey lines were NNE-SSW- oriented and had a separation of 500 m, but the orthogonal tie-lines had a line spacing of 5000 m. The survey was a part of the mineral resource assessment program for southeast Greenland 2009-2015.

The region forms the eastern Greenlandic part of the Archaean North Atlantic Craton that is characterized by migmatitic orthogneisses, narrow bands of mafic granulite, ultramafic and possible meta-sedimentary rocks. The area is structurally complex with evidence of several deformation events in the Archaean. In the central part of the survey area the Skjoldungen Alkaline Provinces is associated with late- to post-tectonic granite and alkaline-carbonatitic rocks that are intruded in the basement rocks before a following extensional deformation.



**Total magnetic intensity map from the Aeromag 2012 survey in south eastern Greenland from 61°45'N to 64°30'N.**

Data compilations can be directly downloaded from [Greenland Portal](#) by entering "Geophysics – individual surveys" and selecting this survey. To order hardcopies of map sheets, please contact Geus by email [bhm@geus.dk](mailto:bhm@geus.dk).

**Selected references:**

- EON Geosciences Inc., 2012, High Resolution Aeromagnetic Survey – Southeast Greenland, Aeromag 2012 Block. Final Survey Report. 32 pp.